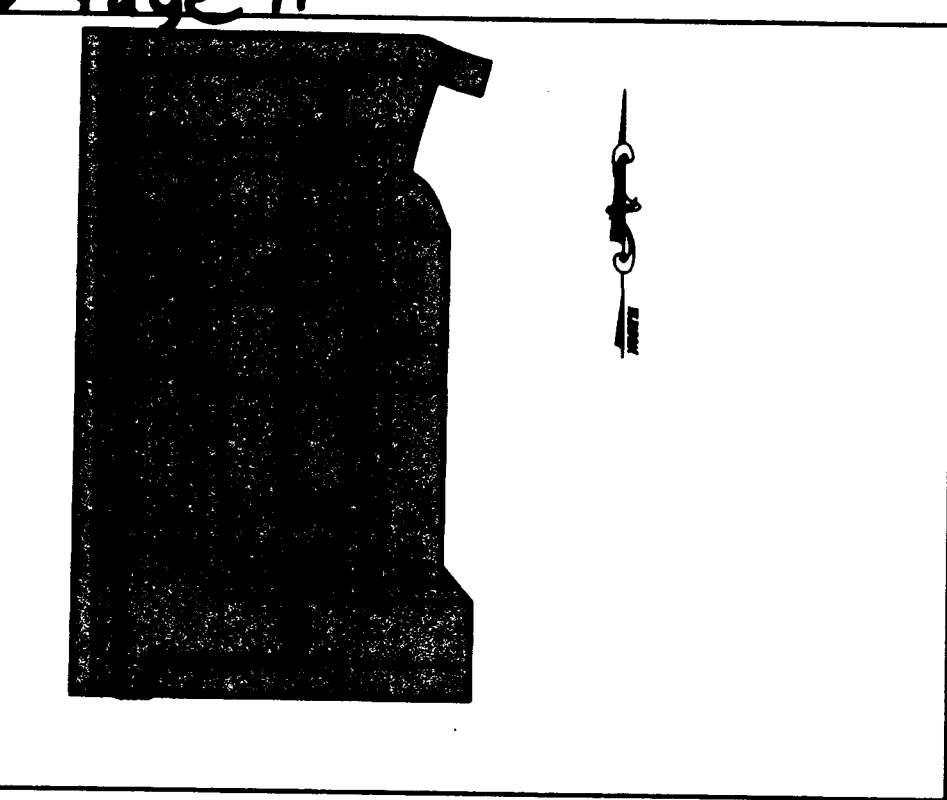


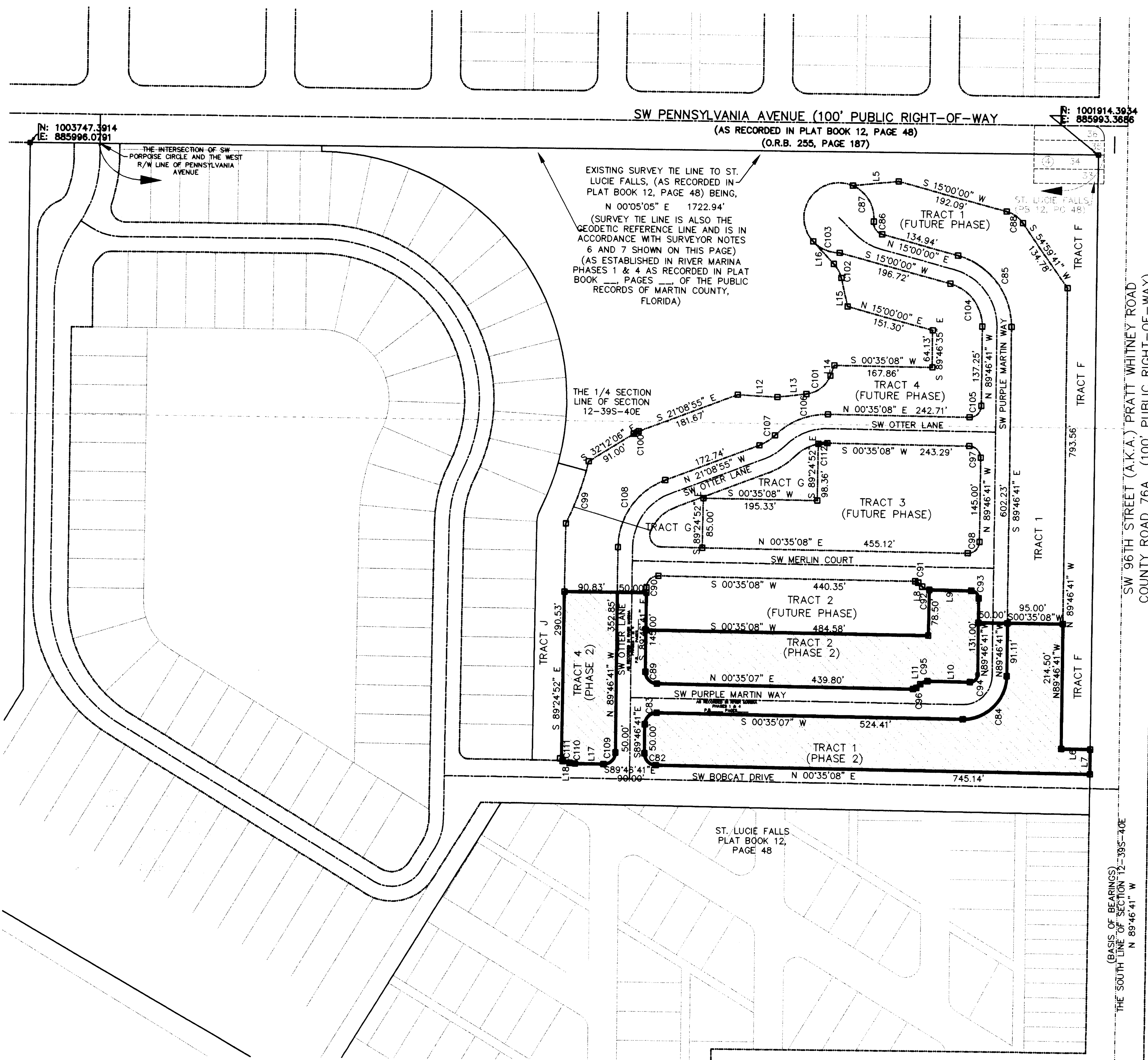
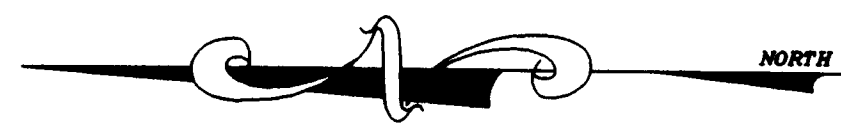
# RIVER MARINA PUD, PHASE 2

REPLAT OF A PORTION OF TRACTS 1, 2, & 4, RIVER MARINA PUD, PHASES 1 & 4, RECORDED IN PLAT BOOK 16, PAGE 25  
MARTIN COUNTY, FLORIDA SECTION 12, TOWNSHIP 39 SOUTH, RANGE 40 EAST, MARTIN COUNTY, FLORIDA

Plat Book 16 Page 41



KEY MAP



**SURVEYOR'S NOTES:**

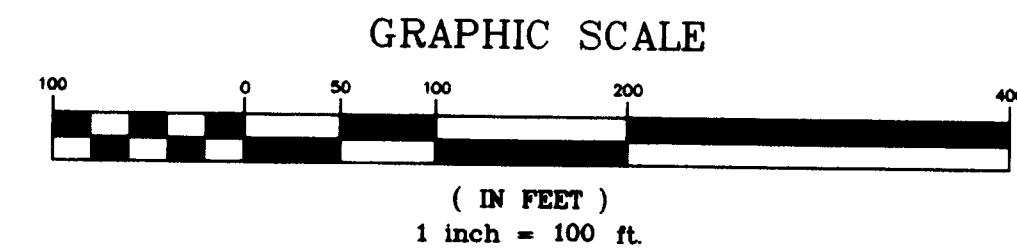
1. THE BEARING STRUCTURE OF THIS PLAT IS BASED ON THE SOUTH LINE OF SECTION 12, TOWNSHIP 39 SOUTH, RANGE 40 EAST, AS BEING N 89°46'41" W.
2. IN THE EVENT THAT MARTIN COUNTY DISTURBS THE SURFACE OF A PRIVATE STREET DUE TO MAINTENANCE, REPAIR OR REPLACEMENT OF A PUBLIC IMPROVEMENT LOCATED THEREIN, THEN THE COUNTY SHALL BE RESPONSIBLE FOR RESTORING THE STREET SURFACE ONLY TO THE EXTENT WHICH WOULD BE REQUIRED IF THE STREET WERE A PUBLIC STREET, IN ACCORDANCE WITH COUNTY SPECIFICATIONS.
3. IT SHALL BE UNLAWFUL TO ALTER THE APPROVED SLOPES, CONTOURS, OR CROSS SECTIONS OR TO CHEMICALLY, MECHANICALLY, OR MANUALLY REMOVE, DAMAGE, OR DESTROY ANY PLANTS IN THE LITTORAL OR UPLAND TRANSITION ZONE BUFFER AREAS OF CONSTRUCTED LAKES EXCEPT UPON THE WRITTEN APPROVAL OF THE GROWTH MANAGEMENT DIRECTOR, AS APPLICABLE. IT IS THE RESPONSIBILITY OF THE OWNER OR HOME OWNERS ASSOCIATION, ITS SUCCESSORS OR ASSIGNS TO MAINTAIN THE REQUIRED SURVIVORSHIP AND COVERAGE OF THE RECLAIMED UPLAND AND PLANTED LITTORAL AND UPLAND TRANSITION AREAS AND TO ENSURE ON-GOING REMOVAL OF PROHIBITED AND INVASIVE NON-NATIVE PLANT SPECIES FROM THESE AREAS.
4. THERE SHALL BE A 10 FOOT WIDE UTILITY EASEMENT ADJACENT AND PARALLEL TO ALL ROAD RIGHTS-OF-WAY WITHIN THIS PLAT.
5. COORDINATES SHOWN ON PLAT ARE ESTABLISHED BY GLOBAL POSITIONING SYSTEM (GPS) WHICH MEET OR EXCEED THIRD ORDER CLASS I ACCURACY STANDARDS ACCORDING TO CURRENT PUBLICATION OF THE FEDERAL GEODETIC CONTROL COMMITTEE (FGCC) PROCEDURES.
6. COORDINATES WERE DERIVED FROM TWO FIRST ORDER GEODETIC CONTROL STATIONS (NATIONAL GEODETIC SURVEY POINT IDENTIFICATION # AJ8252 AND NATIONAL GEODETIC SURVEY POINT IDENTIFICATION # AJ8253), CONTROL STATIONS HAVING A REFERENCE BEARING OF S 27°50'03" W
- 7) ALL LINES ARE NON-RADIAL UNLESS OTHERWISE SHOWN

**LEGEND**

- Δ = DELTA
- R = RADIUS
- A = ARC
- C = CHORD
- CB = CHORD BEARING
- PCP = PERMANENT CONTROL POINT
- PC = POINT OF CURVATURE
- PT = POINT OF TANGENCY
- R/W = RIGHT OF WAY
- FIR = FOUND IRON ROD "NO IDENTIFICATION"
- FIRC = FOUND IRON ROD WITH CAP
- FIP = FOUND IRON PIPE "NO IDENTIFICATION"
- FIPC = FOUND IRON PIPE WITH CAP
- SIRC = SET IRON ROD WITH CAP "LB 7288"
- CONC = CONCRETE
- PUD = PLANNED UNIT DEVELOPMENT
- FN&D = FOUND NAIL AND DISK
- SN&D = SET NAIL AND DISK
- ST = SAINT
- A.K.A = ALSO KNOWN AS
- PI = POINT OF INTERSECTION
- (P) = PLAT
- (M) = MEASURED
- N = NORTH
- S = SOUTH
- E = EAST
- W = WEST
- P.R.M. = PERMANENT REFERENCE MONUMENT
- L = LENGTH
- U.E. = UTILITY EASEMENT
- OR = OFFICIAL RECORDS
- BK = BOOK
- PGS = PAGES
- INDICATES PERMANENT REFERENCE MONUMENTS  
(SET 4"x4"x18" CONCRETE MONUMENT WITH BRASS DISK STAMPED "PRM LB 7288")
- INDICATES PERMANENT CONTROL POINTS  
(SET NAIL & BRASS DISK STAMPED "PCP LB 7288")
- INDICATES 1/2"x18" IRON ROD  
(SET IRON ROD WITH CAP STAMPED LB 7288)
- D.E. INDICATES DRAINAGE EASEMENT
- L.M.E. INDICATES LAKE MAINTENANCE EASEMENT

LINE	BEARING	LENGTH
L1	N 44°51'30" E	9.49'
L2	S 14°26'52" E	9.03'
L3	N 13°53'47" E	12.38'
L4	N 51°29'10" E	7.70'
L5	S 05°52'37" E	78.84'
L6	S 00°35'08" W	50.00'
L7	N 89°46'41" W	42.56'
L8	N 44°51'30" E	9.48'
L9	S 00°35'08" W	71.77'
L10	S 00°35'07" W	72.40'
L11	S 44°24'52" E	9.03'
L12	S 22°54'48" W	82.97'
L13	S 00°15'07" E	50.02'
L14	S 89°37'28" E	19.51'
L15	N 77°03'09" E	50.05'
L16	N 46°55'55" E	50.02'
L17	N 00°35'08" E	48.97'
L18	N 13°53'47" E	12.38'

CURVE TABLE					
CURVE	LENGTH	RADIUS	DELTA	CHORD	DIRECTION
C82	31.29'	20.00'	89°38'11"	28.19'	S 45°24'13" W
C83	31.54'	20.00'	90°21'49"	28.37'	N 44°35'47" W
C84	118.29'	75.00'	90°21'49"	106.40'	S 44°35'47" E
C85	164.11'	125.00'	75°13'19"	152.57'	N 52°36'39" E
C86	28.27'	20.00'	80°59'27"	25.98'	S 55°29'39" W
C87	76.55'	60.00'	73°05'46"	71.46'	N 59°26'34" E
C88	34.90'	50.00'	39°59'41"	34.20'	N 34°59'50" E
C89	31.29'	20.00'	89°38'11"	28.19'	S 45°24'13" W
C90	31.54'	20.00'	90°21'49"	28.37'	N 44°35'47" W
C91	6.18'	8.00'	44°16'22"	6.03'	N 22°43'19" E
C92	13.91'	18.00'	44°16'22"	13.57'	S 22°43'19" W
C93	20.34'	13.00'	89°38'11"	18.33'	N 45°24'13" E
C94	20.50'	13.00'	90°21'49"	18.44'	S 44°35'47" E
C95	14.14'	18.00'	45°00'00"	13.78'	N 21°54'52" W
C96	6.28'	8.00'	45°00'00"	6.12'	S 21°54'52" E
C97	31.29'	20.00'	89°38'11"	28.19'	N 44°35'47" E
C98	31.54'	20.00'	90°21'49"	28.37'	N 44°35'47" E
C99	114.15'	425.00'	13°42'08"	113.27'	S 70°20'54" E
C100	9.65'	50.00'	11°33'10"	9.63'	N 26°40'30" W
C101	54.52'	50.00'	62°49'01"	52.11'	S 38°12'57" E
C102	27.55'	50.00'	51°34'01"	27.20'	N 61°16'05" E
C103	59.68'	60.00'	48°35'57"	49.56'	S 22°35'36" W
C104	98.47'	75.00'	75°13'19"	91.54'	N 52°36'39" E
C105	31.54'	20.00'	90°21'49"	28.37'	S 44°35'47" E
C106	100.72'	125.00'	45°00'00"	98.02'	N 22°29'52" W
C107	31.54'	20.00'	90°21'49"	28.37'	S 44°35'47" E
C108	149.73'	125.00'	68°37'46"	140.93'	N 55°27'48" W
C109	31.54'	20.00'	90°21'49"	28.37'	S 44°35'47" E
C110	9.29'	40.00'	13°18'39"	9.27'	S 07°14'27" W
C111	2.38'	40.00'	3°24'21"	2.38'	N 12°11'36" E
C112	15.70'	75.00'	11°59'50"	15.67'	N 60°24'39" W



**Geodetic Survey Services, Inc.**  
1501 Robert J. Conlan Blvd Suite 130  
Palm Bay, FL 32905  
321-724-6659